

Welcome To
The Cedar

PEARSONS WOOD VIEW

WESSINGTON LANE | SOUTH WINGFIELD | DERBYSHIRE

Created by



For Sale with





To View Available Plots and Pricing,
Scan the QR Code or Click [Here](#)



Development Layout

Pearsons Wood View

Wessington Lane, South Wingfield, Derbyshire, DE55 7SW

This plan is indicative and is for guidance purposes only. It does not form part of any contract or agreement and does not show ownership boundaries, easements, or wayleaves. Subject to change. For enquiries regarding specific details or availability, please discuss with our Sales Consultant.

- | | | |
|---|--|---------------------------------------|
| Ash
3 bedroom semi-detached home | Beech
2 bedroom semi-detached home | Cedar
4 bedroom family home |
| Cherry
3 bedroom semi-detached home | Chestnut
4 bedroom family home | Hazel
4 bedroom family home |
| Hornbeam
4 bedroom family home | Maple
4 bedroom family home | Oak
4 bedroom family home |

Specification

Kitchen:

- Luxury Custom-Built by Karl Benz
- High-Spec Neff Integrated Appliances
- Quartz Worktops and Upstands
- Optional Extras on Plots that are Not Yet Built

Heating & Water:

- Gas Central
- Heating is all Multi-Zoned and Thermostatically Controlled
- Under Floor Heating to the Ground Floor and Radiators to the First Floor
- Dual Fuel Towel Radiators in Bathrooms

Flooring (included):

- Carpets: Bedrooms, Landings and Individual Living Areas – Victoria Easicare Stain Resistant – Heavy Duty, Including 10 Year Wear and Stain Warranty
- Woodstrip Laminate Flooring (Quickstep Impressive) included: Kitchen, Living/Dining Rooms and Hallway

Bathroom:

- Duravit Toilets and Basins
- Vitra Showers
- Large Shower Enclosures
- Contemporary Porcelain and Ceramic Tiles
- Hansgrohe Taps

Electrical:

- Recessed Ceiling Lights Throughout the Ground Floor and Bathrooms
- BT Fibre Ready
- Telephone Points
- Satin Chrome Sockets and Switches
- USB Integrated Plug Sockets to the Kitchen, Lounge and Bedrooms
- 3 Phase Power Supply to Each Plot

Windows:

- UPVC Energy Efficient, High-Quality Double Glazed Window with 10 Year Warranty
- Bi-Fold Doors Included with Numerous Plots
- Brushed Chrome Door Handles and Furniture

Garage:

- Lighting and Power Included

Warranty:

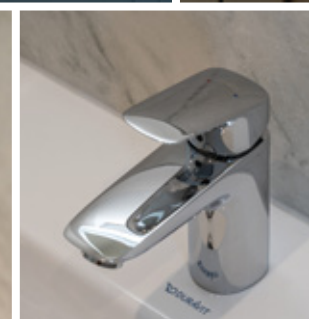
- 10 Year Build Warranty

Tenure Details and Maintenance:

- Freehold
- Site Maintenance Fee TBC

- **Some plots may vary**

Note: Whilst we aim to make these particulars as accurate as possible, please be aware that they have been composed for guidance purposes only. Therefore, the details within should not be relied on as being factually accurate and do not form part of an offer or contract.



Images for Illustration Purposes Only

Welcome to The Cedar

Beautifully appointed for contemporary living, the Cedar is an attractive four bedroomed detached home that has been consciously designed around the essence of family life.

The Cedar contains approximately 1162 sq.ft. (108 sq.m.) of luxury accommodation over two floors and incorporates high-quality brands such as Neff, Duravit and Hansgrohe. A wonderful open plan living kitchen provides the heart of the home and comprises a nicely sized living room and a dining kitchen with fully integrated appliances. There is also a useful utility room and a downstairs WC. The four bedrooms are positioned on the first floor, one of which has an en-suite shower room. The Cedar offers an extension to its living areas through its landscaped rear garden and terrace, which connect to the living kitchen, allowing ease of use for entertaining. Off-road parking for two vehicles is provided within a private driveway and there is the added benefit of a single garage.

The Development & Location

Nestled within the Amber Valley, just a short distance away from the Peak District border, sits Pearsons Wood View. An exclusive development of 32 homes, Pearsons Wood View offers a range of two, three and four bedroomed residences, all with their own unique style, unified by exceptional quality. Constructed by PTA Developments, an established developer, who have a reputation for excellence in the new homes sector.

Pearsons Wood View is positioned within a wonderful setting that is bordered by countryside to the North and East of the site. Cleverly designed to make the most of the landscape views, while carefully selecting materials and technologies to achieve excellent energy efficiency, this exquisite development delivers contemporary living, which is fit for 21st-century family lifestyles. The whole site completion is projected for Autumn/Winter 2025.

The development is situated within the village of South Wingfield and has a host of neighbouring localities which offer amenities such as public houses and schooling. Alfreton town is accessible within a short drive for supermarkets, a leisure centre and shops. In addition, Matlock can also be reached within a short journey. Pearsons Wood View is perfectly positioned for those who enjoy the outdoors due to countryside walks being available from the doorstep. Local attractions such as Hardwick Hall, Heights of Abraham, Kedleston Hall and Crich Tramway Village are conveniently accessed for those family days out. From the development, the M1 provides journeys to Sheffield, Nottingham, Leeds and London. For rail journeys, Alfreton station provides links to Chesterfield, Sheffield and Nottingham, whilst Matlock station connects with Derby for onward routes to Birmingham and London.



Plots 12 & 17



Computer Generated
Images are for Illustration
Purposes Only







Entrance Hall

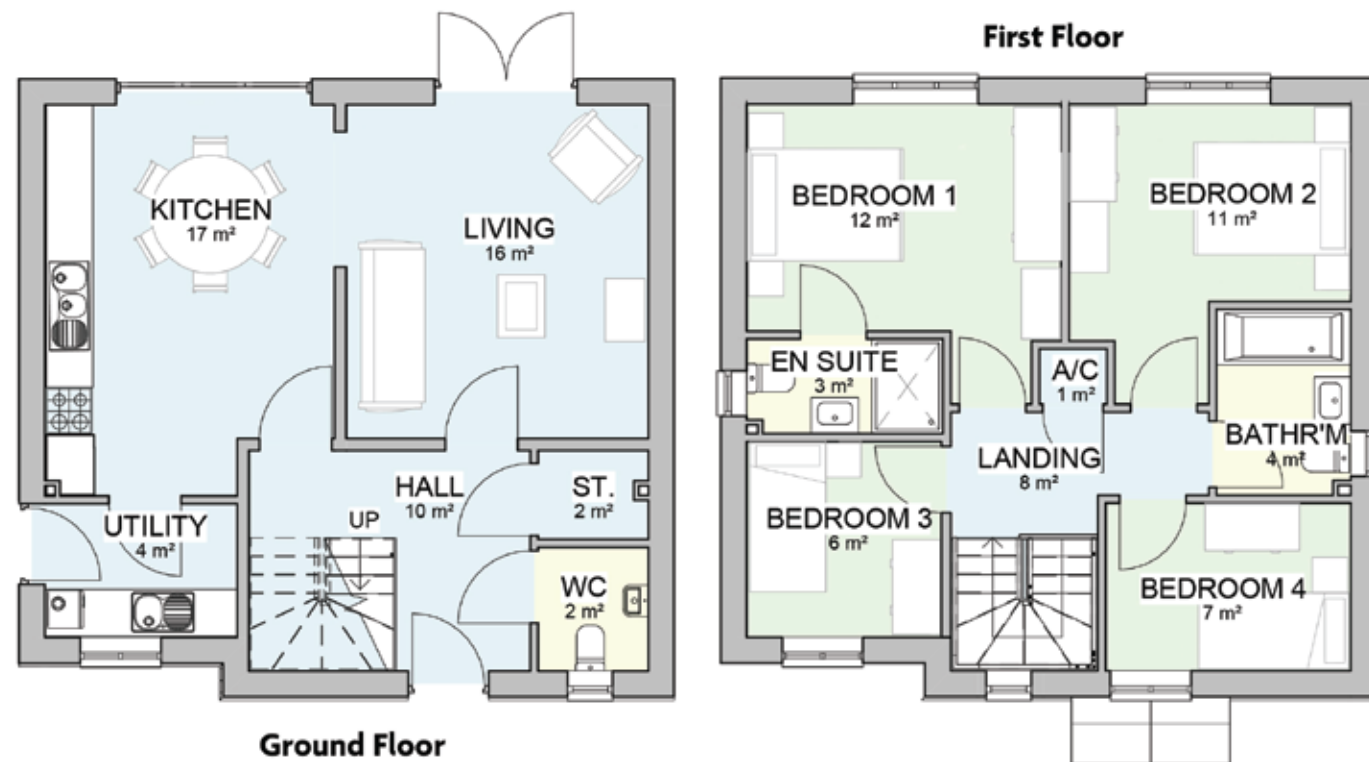




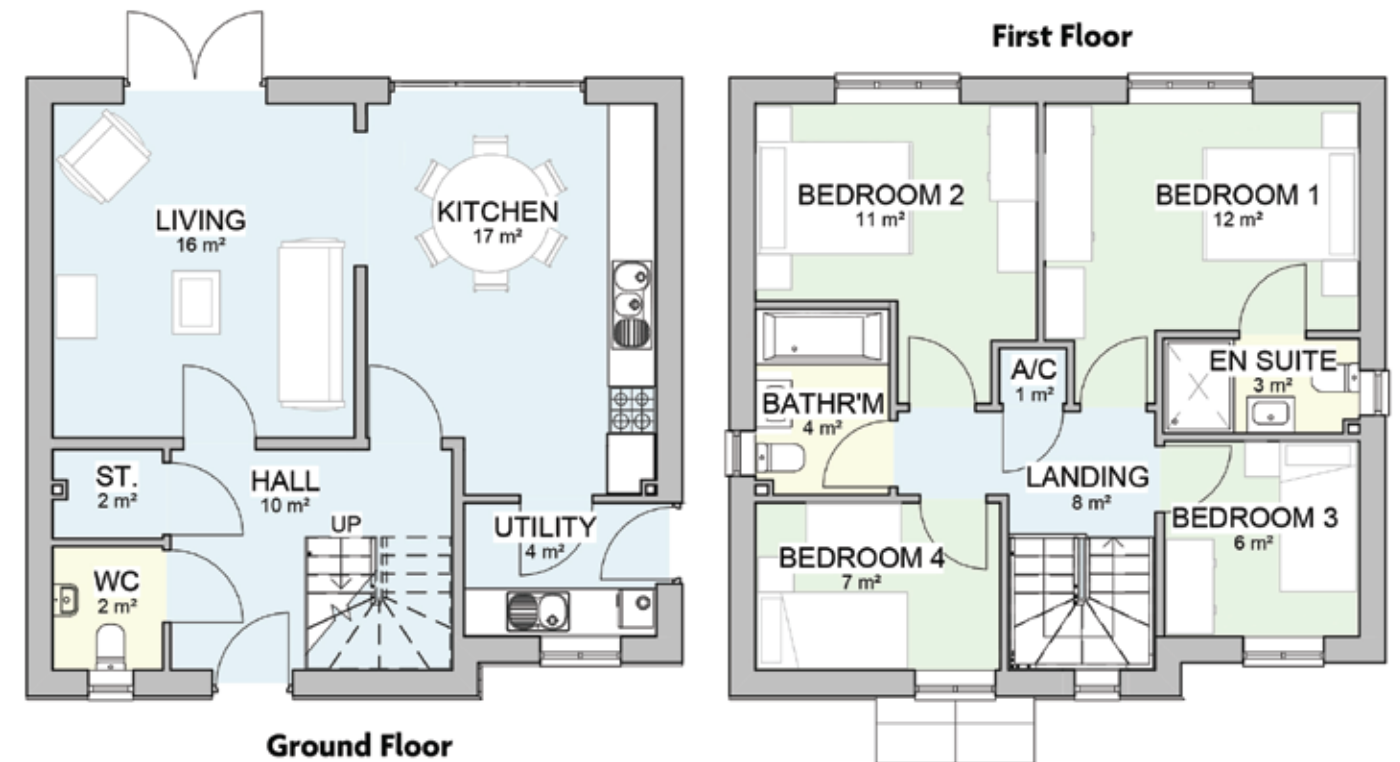


Floor Plans

Cedar Layout 1



Cedar Layout 2



Total Square Footage
1162 sq.ft. (108 sq.m.)

Measurements are approximate and slight variations may occur during construction.

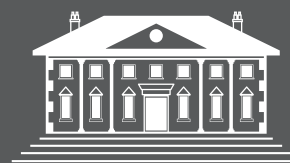
PEARSONS WOOD VIEW

Wessington Lane
South Wingfield
Derbyshire, DE55 7SW
what3words- wanting.pancake.quicksand

Created by



For Sale with



Blenheim
Park Estates

*Contact our Team for the
Full Site Brochure*

Call: 0114 358 2020
Visit: www.bpestates.co.uk